

# Extra benefits – just for you

CareSuper members not only have access to financial advice<sup>†</sup> and educational webinars, but also to our partnerships for other great rates, discounts and services. Discover the added perks of your CareSuper membership such as discounted health cover and tax returns.

## Here are some savings CareSuper members can make

### CHOOSE FROM DISCOUNTED HEALTH INSURANCE OPTIONS



#### HCF

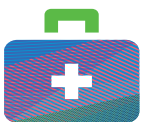
Enjoy a 5% discount on HCF's corporate products range, plus much more.



#### nib

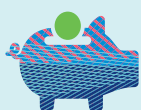
Save money on your nib premiums with a membership discount of up to 10%.

### YOUR PATHWAY TO A HEALTHIER LIFE

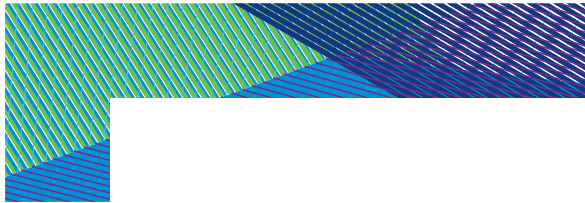


#### MetLife 360Health

As a member of CareSuper, you and your family\* have virtual access to professional health and medical services through MetLife 360Health. This is available at no extra cost to you, designed to support your overall health and wellbeing.



Learn more about your extra benefits at [caresuper.com.au/benefits](https://caresuper.com.au/benefits).



## Access support where it counts

### TAKE CONTROL OF YOUR FINANCIAL FUTURE WITH EXPERT ADVICE

As a CareSuper member you have access to financial advice over the phone<sup>†</sup> as part of your membership. Our planners can give you guidance on super-related topics like investment choice and insurance – at no extra cost to you.



If your concerns are broader than super or your financial situation is more complicated, your planner may refer you on for comprehensive or complex advice.<sup>†</sup>

Start your advice journey by booking a call-back at [caresuper.com.au/advice](https://caresuper.com.au/advice).

### PLAN YOUR PATH TO RETIREMENT WITH OUR EDUCATIONAL WEBINARS



We hold regular webinars on topics from retirement planning to investment updates, all at no extra cost to you. And as a fund passionate about supporting women's financial wellbeing, we also hold specific webinars on women's career development and retirement planning.

If you're interested in attending a webinar, email [events@caresuper.com.au](mailto:events@caresuper.com.au) for more information.

### CREATE A THRIVING WORKPLACE WITH SUPERFRIEND

We've partnered with SuperFriend to support the design and delivery of mental health initiatives that enable workplaces to thrive. They can help with everything from developing a workplace wellbeing strategy to navigating challenging interactions.



For more information and helpful resources, visit [superfriend.com.au](https://superfriend.com.au).



**GET IN TOUCH**

### CHAT TO US ABOUT ALL THE BENEFITS OF A CARESUPER MEMBERSHIP

Find your dedicated relationship manager

Visit [Meet your client partnership team | CareSuper](#)  
**1300 360 149** (Australia) **+61 3 9067 2619** (overseas)  
8am to 8pm weekdays AET, except public holidays  
[caresuper.com.au](https://caresuper.com.au)

\*The term 'family' consists of your children, partner, parents and parents-in-law.

<sup>†</sup>Financial advice obtained over the phone, or through MemberOnline, is provided by Mercer Financial Advice (Australia) Pty Ltd (MFAAPL) ABN 76 153 168 293, Australian Financial Services Licence #411766. Comprehensive Advice is provided by financial planners who are Authorised Representatives of Industry Funds Services Limited (IFS). IFS is responsible for any advice given to you by its Authorised Representatives. Industry Fund Services Limited ABN 54 007 016 195 AFSL 232514. Complex personal financial advice is provided by Australian Unity Personal Financial Services Limited (ABN 26 098 725 145, AFSL 234459). Australian Unity will discuss any applicable fees directly with you prior to them being charged. CareSuper receives no financial incentives or commissions regarding this referral service.

The advice in this document is of a general nature. We have not taken into account your particular financial needs, circumstances and objectives. We recommend you assess your own financial situation, seek professional advice from a licensed financial adviser and read the Product Disclosure Statement and Target Market Determination, available at [caresuper.com.au/pds](https://caresuper.com.au/pds), before deciding to make any decisions related to your super. While every care has been taken as to the accuracy of this information, CareSuper takes no liability for the correctness of this information. CareSuper is not responsible for any loss, direct or indirect, resulting from reliance of the information contained in this document. Past performance is not a reliable indicator of future performance and you should consider other factors before choosing a fund or changing your investments.

CARE Super Pty Ltd (Trustee) ABN 91 006 670 060 AFSL 235226 CARE Super (Fund) ABN 98 172 275 725