

Contribution form



IMPORTANT

Use this form if you want to make personal contributions by cheque. Include your cheque when returning this completed form to us.

To make a BPAY® contribution call **1300 360 149** or log in to MemberOnline at caresuper.com.au/login to find your Reference Number and Biller Code. Then make the payment from your bank account.

Complete this form in blue or black pen using BLOCK LETTERS and tick where applicable.

1. YOUR PERSONAL DETAILS

Member account number	Date of birth (DD/MM/YYYY)	
Surname	Title	
Given names		
Residential address (required)		
Suburb	State/territory	Postcode
Mobile	Daytime telephone	
Email		

For more information on claiming a tax deduction on your personal contributions, see page 2.

2. PAYMENT BY CHEQUE

I've included my cheque as payment for a one-off contribution.

CHEQUE DETAILS

Bank name/financial institution	
Cheque number	\$ Contribution/cheque amount

Please make your cheque payable to CareSuper and attach it to this form.

3. YOUR TAX FILE NUMBER (TFN)

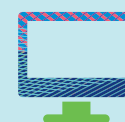
My tax file number is: _____ OR

Tick (✓) if previously provided

Providing your TFN to CareSuper is not compulsory and not supplying it isn't an offence. However, if you don't tell us your TFN:

- You might pay more tax on your super contributions. Sometimes you may be able to claim this tax back, however time limits and other rules may apply.
- CareSuper is not able to accept contributions from you.
- You may pay more tax than you have to when you claim your superannuation benefits.
- It may be more difficult for CareSuper to locate or consolidate all your superannuation benefits.

To read our full TFN statement please go to caresuper.com.au/tfncollectionstatement.



DID YOU KNOW?

You can tell us your TFN when you log in to MemberOnline at caresuper.com.au/login or call **1300 360 149**.

4. IMPORTANT INFORMATION

Cheques can take up to three working days to be allocated to your account (after we've received it together with your completed form).

Your eligibility to make certain types of contributions may depend on your total super balance. If you reach these limits, there'll be restrictions on the types and amounts of contributions you can make in the following financial year. More information is available at caresuper.com.au/knowyourlimits.

CLAIMING A TAX DEDUCTION

If you intend to claim a tax deduction on your contribution, you'll also need to complete a **Notice of intent** form available at caresuper.com.au/noticeofintent and return it to CareSuper before:

- Lodging your tax return for the year in which you've made the relevant contribution
- The end of the following financial year.

For more information on claiming a tax deduction, call **1300 360 149**.

You may not be able to submit a **Notice of intent** if you've made a withdrawal from your account. Contact us before you request a benefit payment or rollover.

There's a limit (or cap) to the amount of contributions you can make without incurring additional tax. If you exceed the cap you may have to pay extra tax. Visit ato.gov.au to find out more.

5. AUTHORISATION

PRIVACY

In completing this form:

- I confirm I've read the CareSuper Privacy Policy at caresuper.com.au/privacypolicy
- I understand how CareSuper intends to handle my personal information and that my personal information will only be used for the purposes specified
- I consent to the collection and use of my personal information by the Trustee for the purpose of making contributions.

If you have any questions about your rights under the privacy legislation, please call **1300 360 149**.

DECLARATION

I declare that all the information supplied by me on this form is true and correct. I understand CareSuper can only accept contributions based on the employment status requirements outlined above.

X

Member's signature

_____/_____/_____
Date (DD/MM/YYYY)

Full name



Please keep a copy of this document for future reference.



YOU MUST PRINT AND THEN SIGN THIS FORM

The form won't be valid if you don't sign and date it.

ONCE YOU'RE DONE

Return this completed form and your cheque to:

**CareSuper
Locked Bag 20019
Melbourne VIC 3001**

For more information call **1300 360 149**.